

OUTDOOR

LIGHT

VOL IX



WWW.BLASKLIGHTING.COM

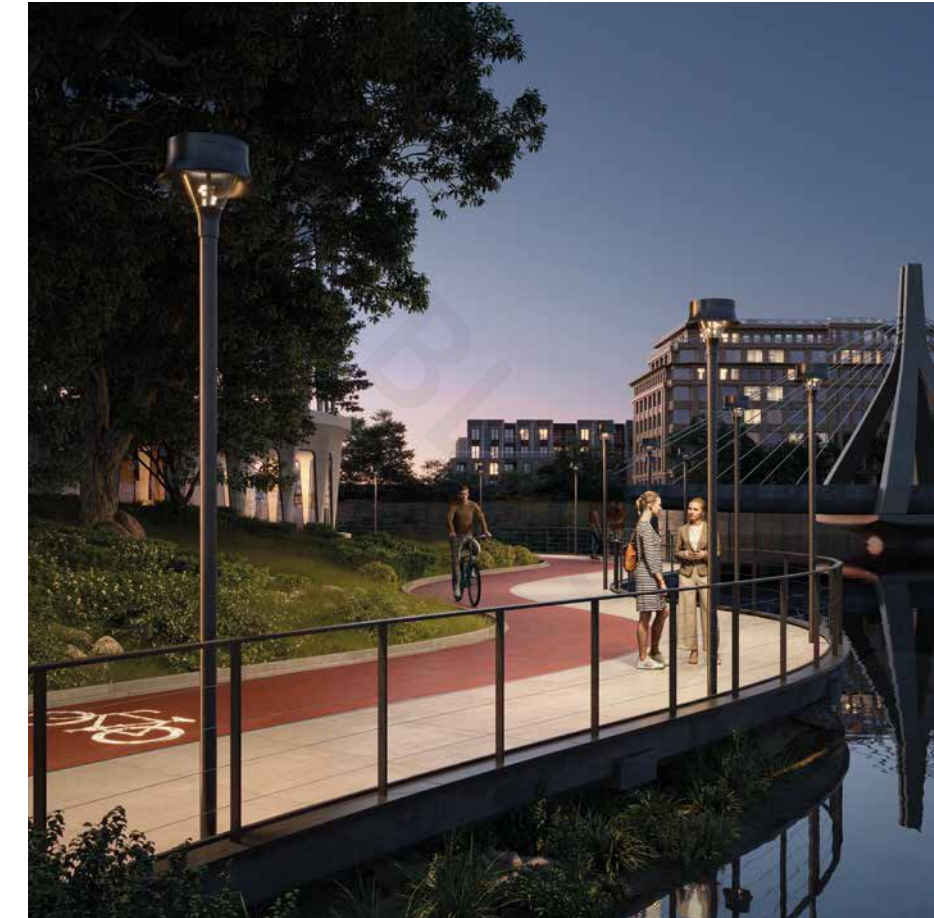


Range of park and urban

luminaires, which is a game changer when it comes to external lighting. Excellent parameters, elimination of light pollution, modular structure and creative design are not its only advantages.

The luminaires were created in line with the concept of Nature Centric Lighting, with ecology and safety of both people and animals in mind.

The designers have applied a range of modern solutions, which significantly expand application possibilities of park and urban luminaires.





ECOLOG

LONGER LIFESPAN

Thanks to the easy replacement of individual modules or components, infrastructure operators can carry out servicing tasks more easily than ever before, eliminating the need to dispose of the whole luminaire.

ENERGY EFFICIENCY

The possibility to upgrade or replace specific components, such as the power supply and LED module, makes it easier for the owners to implement newer, more energy-efficient component options in the future.

MATERIAL SAVINGS

The minimised need to replace the entire luminaires, modular design, detachability of the component board, reduce the consumption of materials required for the production of new luminaires.

ADAPTATION TO INDIVIDUAL NEEDS

Regardless of the application area, the Skver LED luminaire enables creating a coherent and diverse urban style, and the use of Tunable White technology and dynamic control will make you stay ahead of the game!

INTEROPERABILITY

Compliance with Zhaga Book 13, 15, and 18 standards allows the Skver LED luminaire to fully utilise its potential. Additionally, equipping the luminaire with TALQ-compatible control systems will help you design the future of your city's infrastructure!



LED luminaires were developed in full compliance with Zhaga Book 13, 15, and 18, which set standards for the positioning and installation of the power supply, LEDs, and Zhaga connectors, making it easier to replace these components in the future. This significantly extends the product's lifespan, ensuring that the city benefits from this standardised modularity,

GUARANTEEING THAT FUTURE
URBAN INFRASTRUCTURE DEVELOPMENT
HAS NO BOUNDS!

Includes C5+ models, which are not only resistant to harsh weather conditions but also to corrosion. Therefore, they can be successfully installed in locations such as promenades, bridges, or piers – anywhere there is direct contact with bodies of water with various degrees of salinity.





Replaceable
light modules



INNOVATIVE APPROACH TO DESIGN

Modular design of the Skver luminaire allows infrastructure owners to customise its configuration to their needs and preferences, making everyday maintenance and servicing easier than ever!





omnidirectional version

They provide premium, pleasant lighting to evenly brighten park spaces, offering universal flexibility.



in the lens version

They allow for adjusting light distribution. Adjusting the position of lenses changes the angle and direction of light distribution by up to 180°, preventing it from spreading in unwanted directions.

Knife switch

A knife switch installed in certain versions of the luminaire shuts off power upon opening its cover. As a result, the person performing modification is fully protected.



Tool-less access to fittings

Accessing electrical and optical components simply requires unscrewing two screws and opening the luminaire cover without any tools.



Best

Luminaires were developed under the Nature Centric Lighting concept, prioritising ecology and safety of people and animals.



Very bad

Limiting light distribution with the backshield accessory ensures comfort wherever you need it.

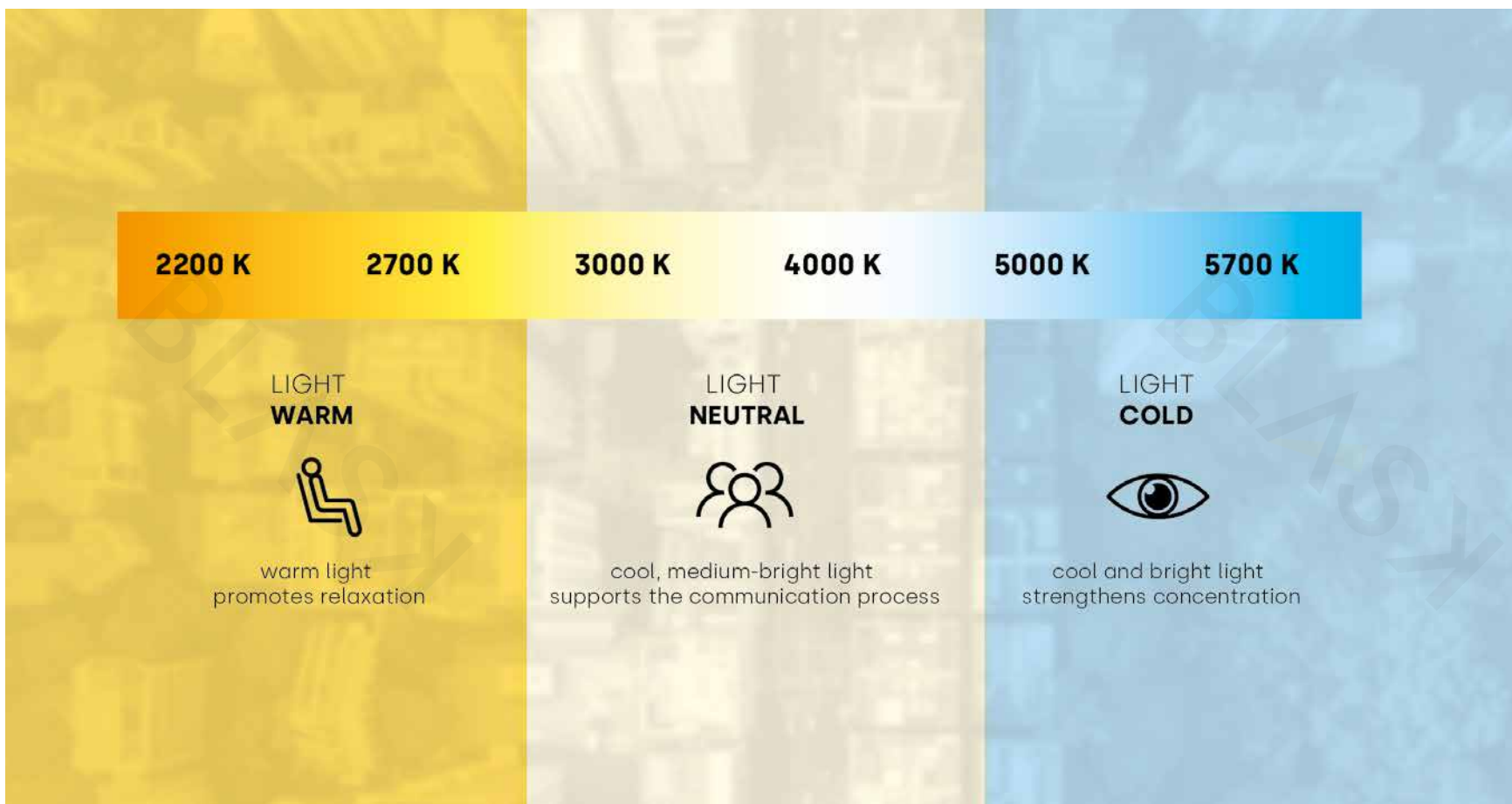
LIGHT DISTRIBUTION AND ITS ADJUSTABILITY

Fixtures can be customised with various special hoods and a backshield, which allows for adjusting light distribution and prevents uncontrolled illumination of large areas. This is done quickly by snapping the accessory into place.

ULOR FACTOR

Road lighting enables safe movement in transportation areas – it allows for proper recognition of the terrain's topography or road geometry. It enhances the comfort of residents, drivers, and cyclists in built-up areas. It is important, however, that the operation of the luminaires does not pollute the natural environment and does not have a negative impact on the users. Light pollution affects not only humans but also their environment. This is why it is so important to adapt the luminaires to the demanding outdoor conditions. The luminaires, with a $ULOR < 1^*$ factor, are designed with the Nature Centric Lighting concept in mind, focusing on ecology and the safety of both people and animals.

*applies to selected indices



「TUNABLE」 「WHITE」

Tunable White (Human Centric Lighting) is a technology that allows the user to control the colour (colour temperature) and luminous flux of a single luminaire or group of luminaires, reflecting the natural light whose colour and intensity changes over the day.

HUMAN CENTRIC LIGHTING

Tunable White also allows the luminaire to adapt to current needs and activities, regardless of the time of day.

There are two types of LEDs in the luminaire and the DALI bus, prompted via the touch panel or application, controls the colour and luminous flux. Manual control is possible or scenes can be pre-set.



POLE MOUNTED
LUMINAIRES

POLE MOUNTED LUMINAIRES

BASIC VERSION

SVOPL1000 LED are ultra-modern luminaires that meet stringent quality and safety requirements.

A wide range of modification options, in line with the Nature Centric Lighting trend, help create spaces that are friendly to people and animals, eliminating light pollution.

This is an exceptionally effective and energy-efficient solution that sets the direction for the development of the lighting industry.

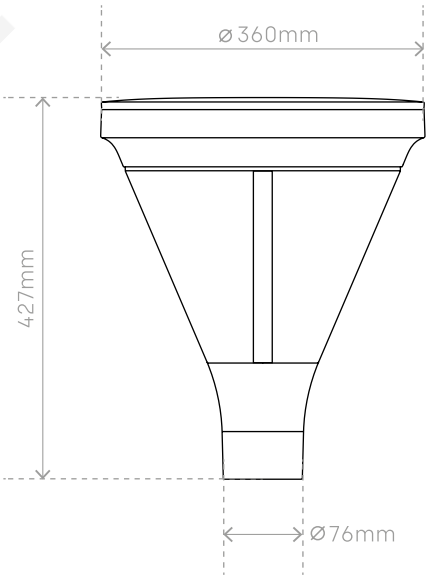


IP 66

IK 10

ULOR < 1

FOR SELECTED
LUMINAIRE INDICES



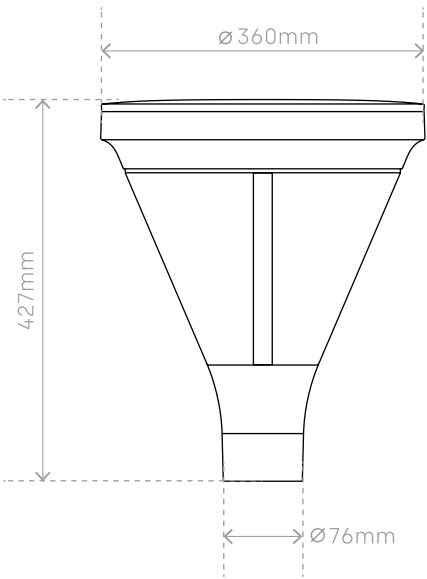
Rated power [W]:	19 - 50
Luminous flux [lm]:	2850 - 7100
Mounting method:	pole mounted
Additional options:	comes standard with a power cable for easy connection and powering the luminaire

POLE MOUNTED LUMINAIRES

MODULAR VERSION

SVOPL1001 LED luminaire in its modular version is characterised by advanced design.

Opening the luminaire doesn't require any tools, making it easy to replace electrical and optical components such as drivers and LEDs. All it takes is removing the panel, which comes with ergonomic handles. This significantly extends the product's lifespan. The replacement of components is carried out in safe conditions. A service technician can replace the board with a new one in just a few minutes, and conduct error diagnosis at their workstation, for example in a workshop or laboratory.



Rated power [W]:	19 - 50
Luminous flux [lm]:	2850 - 7100
Mounting method:	pole mounted
Additional options:	Tool-free access, interchangeable module (LED + power supply + accessories).



IP 66

IK 10

ULOR < 1
FOR SELECTED
LUMINAIRE INDICES

POLE MOUNTED LUMINAIRES

MODULAR VERSION WITH A KNIFE SWITCH

SVOPL1002 LED luminaires in this version are distinguished by their top-notch safety and ergonomic design.

It cuts off power to the particular luminaire upon opening its cover, ensuring safe performance of essential servicing tasks. As a result, the person performing modification is fully protected. The knife switch mechanism is user-friendly, enabling quick and intuitive powering on and off of the luminaire.

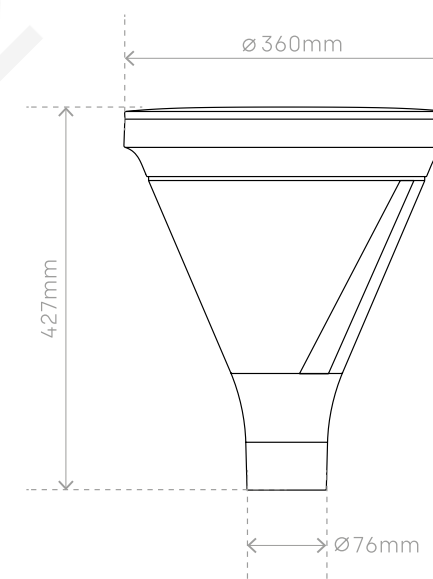


IP 66

IK 10

ULOR < 1

FOR SELECTED
LUMINAIRE INDICES



Rated power [W]:	19 - 50
Luminous flux [lm]:	2850 - 7100
Mounting method:	pole mounted
Additional options:	knife switch connector, cutting off power, safeguards against accidental electric shock



P E N D A N T
L U M I N A I R E S

PENDANT LUMINAIRES

VERSION WITH A FLAT
DIFFUSER



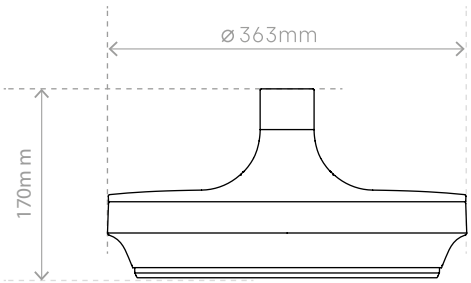
IP 66

IK 10

U L O R < 1
FOR SELECTED
LUMINAIRE INDICES

The pendant version SVOPL1003 LED luminaire was developed to enhance our selection of urban park lighting solutions.

The consistent design allows for the application of various Skver LED luminaires, tailored to the needs of a specific space without disrupting the aesthetics of the surroundings. A flat version of the diffuser can, similarly to floor luminaires, take on different designs depending on whether and which hood it is equipped with.



Rated power [W]:	19 - 50
Luminous flux [lm]:	2850 - 7100
Mounting method:	suspended
Additional options:	knife switch connector, cutting off power, safeguards against accidental electric shock

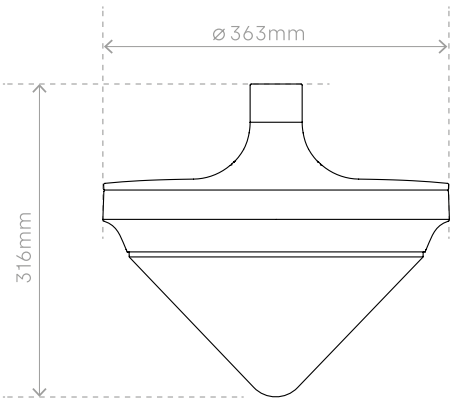
PENDANT LUMINAIRES

VERSION WITH A
DIFFUSER AND A HOOD

SVOPL1004 Pendant luminaires with a diffuser.

Similarly to flat diffuser luminaires, their design can also vary depending on the accessory used.

Designed with modularity in mind, the luminaire's design allows for easy access to the board containing electrical and optical components, enabling effortless replacement or modification.



Rated power [W]:	19 - 50
Luminous flux [lm]:	2850 - 7100
Mounting method:	suspended
Additional options:	knife switch connector, cutting off power, safeguards against accidental electric shock

IP 66

IK 10

U L O R < 1
FOR SELECTED
LUMINAIRE INDICES

